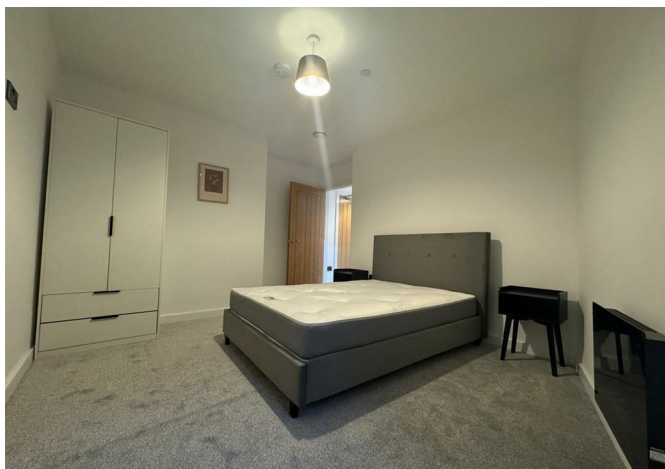




Apartment 13 23 Legge Lane, Birmingham, B1 3LX

£1,000 Per month



Apartment 13 23 Legge Lane, Birmingham, B1 3LX

£1,000 Per month

New to the market, this impressive one double bedroom apartment is located in the brand new Scholars Quarter development in the heart of the Jewellery Quarter, just a short walk from Birmingham city centre and numerous local amenities.

The property benefits from an entrance hallway with ample storage, leading into an open plan living / dining area with access to a private internal facing balcony and stylish grey kitchen with integrated appliances. Also off the hallway is a large double bedroom which is carpeted and a luxury bathroom with shower.

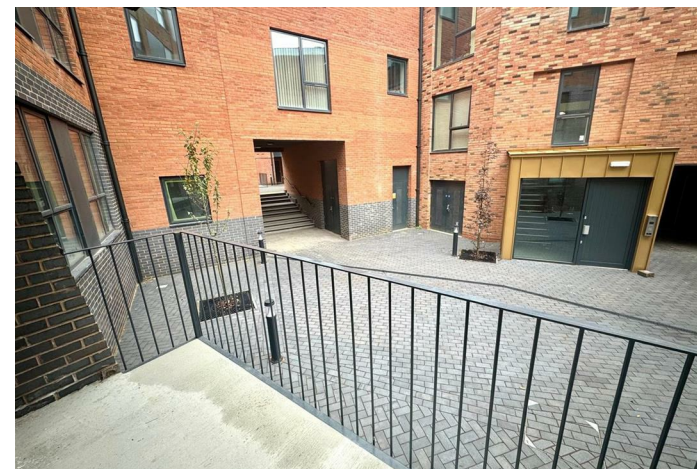
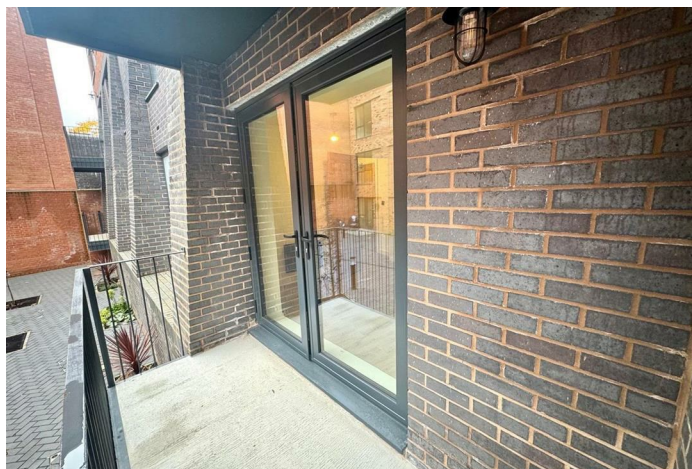
Offered on a furnished basis, with video-entry phone access and neutral decoration throughout.

* Sorry, no allocated parking with this property. *

Description



Situation

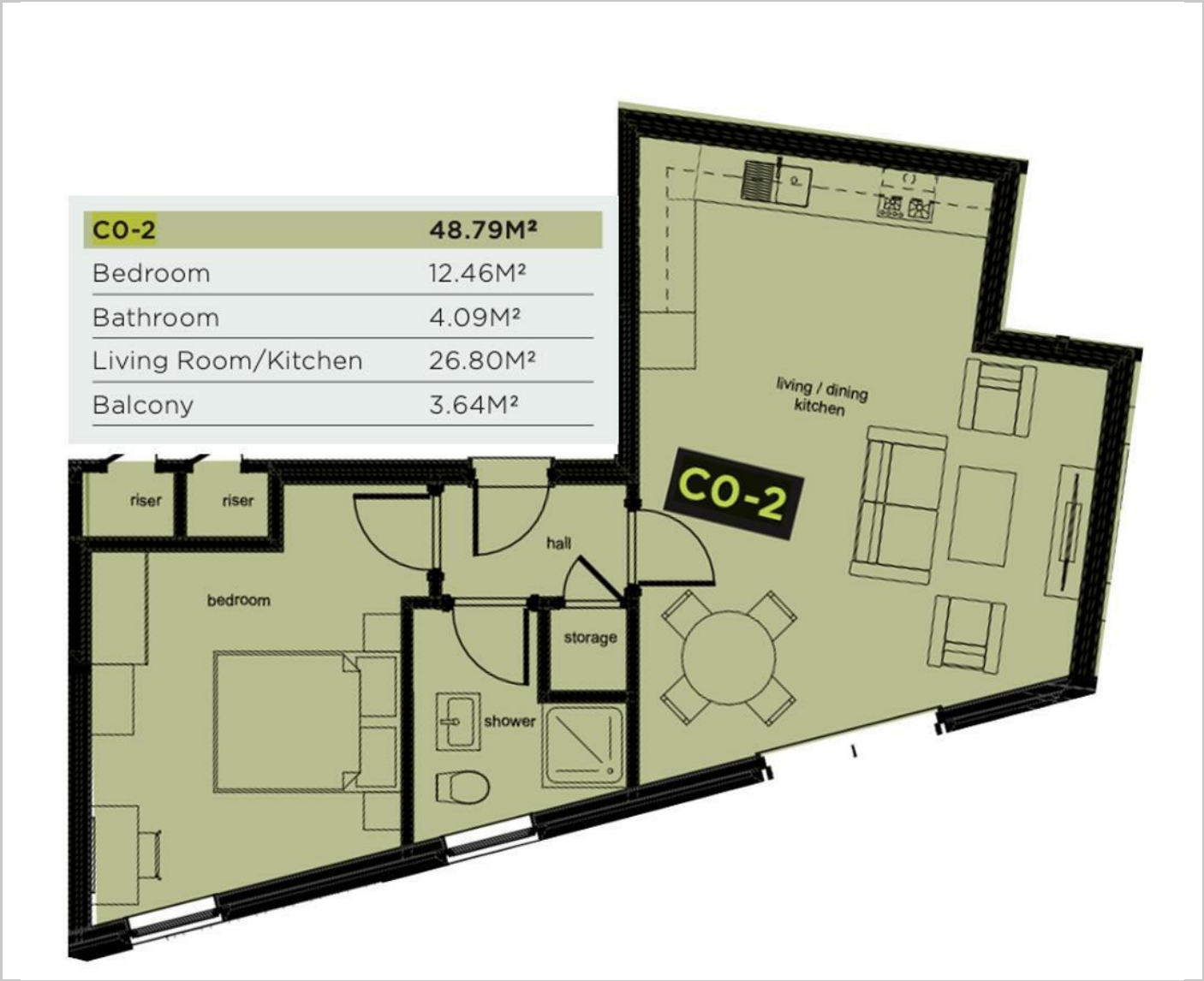


Furnished

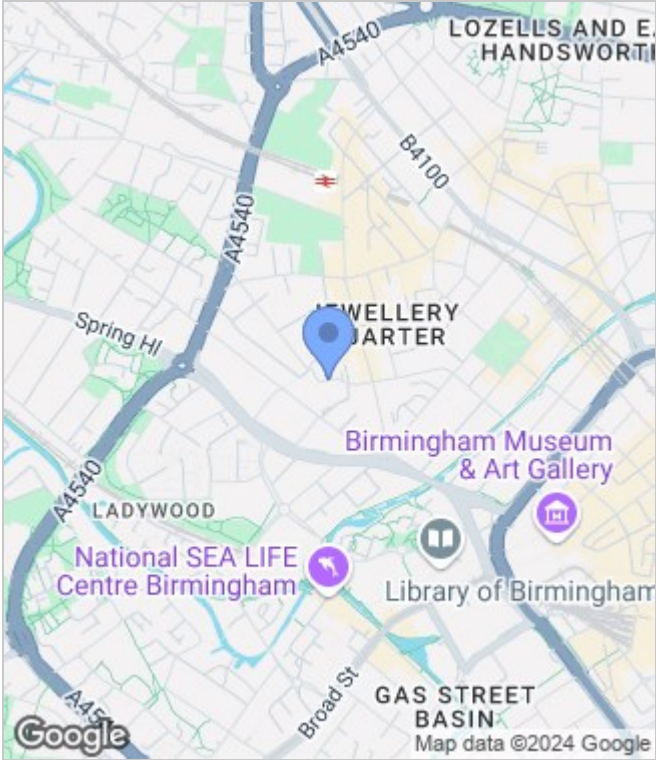
Council Tax Band: New Build

Available: 30th October 2024

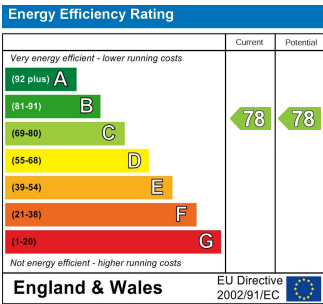
Floor Plans



Area Map



Energy Performance Graph



These particulars, whilst believed to be accurate are set out as a general outline only for guidance and do not constitute any part of an offer or contract. Intending purchasers should not rely on them as statements of representation of fact, but must satisfy themselves by inspection or otherwise as to their accuracy. No person in this firms employment has the authority to make or give any representation or warranty in respect of the property.